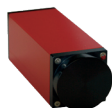


vicosys® FireWire™ (IEEE 1394) Cameras

SERIES	Aton Line Scan series			Guppy series			
--------	-----------------------	--	--	--------------	--	--	--



new




Model	Aton 512	Aton 1024	Aton 2048	F033B/C	F046B/C	F080B/C	F146B/C
Image sensor	7.168 mm Line b/w	14.336 mm Line b/w	28.672 mm Line b/w	1/3" CCD b/w, colour	1/2" CCD b/w, colour	1/3" CCD b/w, colour	1/2" CCD b/w, colour
Pixel number	512	1024	2048	640 x 480	782 x 582	1024 x 768	1392 x 1040
Pixel size	14 x 14 µm ²	14 x 14 µm ²	14 x 14 µm ²	7.4 x 7.4 µm ²	8.3 x 8.3 µm ²	4.65 x 4.65 µm ²	4.65 x 4.65 µm ²
Lens mount	M42x1	M42x1	M42x1	C-Mount			
Data interface	IEEE 1394a			IEEE 1394a			
Datatransfer rate	100, 200, 400 Mbit/sec			100, 200, 400 Mbit/sec			
Full frame frequency	64000/32000/16000 Lines/second pixel clock 36 MHz			up to 60 Hz	up to 53 Hz	up to 30 Hz	up to 17.7 Hz
Gain control	-6 ... +42 dB, 1024 steps			Manual: 0 ... 24 dB, auto gain			
Shutter	1 µsec ... 4095 µsec, step size 1 µsec			20 µsec ... 67 sec, auto shutter			
External trigger	Yes			Yes			
Voltage supply	8 ... 32 VDC, 4 W (via IEEE 1394 port)			8 ... 36 VDC (via IEEE 1394 port)			
Weight	265 g			< 50 g			
Dimensions	45 x 45 x 132 mm ³			30 x 30 x 48.2 mm ³			
Operating temperature	0 ... 45 °C			+5 ... 50 °C			

SERIES	Marlin series				
--------	---------------	--	--	--	--



Model	F033B/C	F080B/C	F131B/C	F146B/C	F201B/C
Image sensor	1/2" CCD b/w, colour	1/3" CCD b/w, colour	2/3" CMOS, b/w, colour	1/2" CCD b/w, colour	„1/1.8" CCD b/w, colour
Pixel number	640 x 480	1024 x 768	1280 x 960	1392 x 1040	1600 x 1200
Pixel size	9.9 x 9.9 µm ²	4.65 x 4.65 µm ²	6.7 x 6.7 µm ²	4.65 x 4.65 µm ²	4.4 µm x 4.4 µm
Lens mount	C-Mount				
Data interface	IEEE 1394a				
Datatransfer rate	100, 200, 400 Mbit/sec				
Full frame frequency	up to 74 Hz	up to 30 Hz	up to 25 Hz	up to 17.4 Hz	up to 12.5 Hz
Gain control	Manual: 0 ... 24 dB, auto gain				
Shutter	11 µsec ... 67 sec, auto shutter			20 µsec ... 67 sec, auto shutter	
External trigger	Yes				
Voltage supply	8 ... 36 VDC (via IEEE 1394 port)				
Weight	< 120 g				
Dimensions	58 x 44 x 29 mm ³				
Operating temperature	+5 ... 45 °C				

vicosys® FireWire™ (IEEE 1394) Cameras

SERIES	Pike series			Oscar series		A600 series	
							
			new				
Model	F145B/C	F421B/C	F505B/C	F510C	F810C	A601f	A601fC
Image sensor	2/3" CCD b/w, colour	1.2" CCD b/w, colour	2/3" CCD b/w, colour	2/3" CCD colour (b/w)	2/3" CCD colour (b/w)	1/2" CMOS b/w	1/2" CMOS colour
Pixel number	1388 x 1040	2048 x 2048	2452 x 2054	2588 x 1958	3288 x 2470	640 x 480	
Pixel size	7.4 x 7.4 µm ²	7.4 x 7.4 µm ²	3.45 x 3.45 µm ²	3.4 x 3.4 µm ²	2.7 x 2.7 µm ²	9.9 x 9.9 µm ²	
Lens mount	C-Mount			C-Mount		C-Mount	
Data interface	IEEE 1394b			IEEE 1394a		IEEE 1394a	
Datatransfer rate	100, 200, 400, 800 Mbit/sec			100, 200, 400 Mbit/sec		100, 200, 400 Mbit/sec	
Full frame frequency	up to 22.7 Hz	up to 15 Hz	up to 15 Hz	up to 7.5 Hz	up to 8.9 Hz	up to 60 Hz	
Gain control	Manual: 0 ... 32 dB, auto gain	Manual: 0 ... 20 dB, auto gain	Manual: 0 ... 24 dB, auto gain	Manual: 0 ... 20 dB, auto gain		Manual: 0 ... 12 dB	
Shutter	36 µsec ... 67 sec, auto shutter	93 µsec ... 67 sec, auto shutter	27 µsec ... 67 sec, auto shutter	20 µsec ... 67 sec, auto shutter		20 µsec ... 81 msec	
External trigger	Yes			Yes		Yes	
Voltage supply	8 ... 36 VDC (via IEEE 1394 port)			8 ... 36 VDC (via IEEE 1394 port)		8 ... 36 VDC (via IEEE 1394 port)	
Weight	250 g			< 170 g			
Dimensions	96.8 x 44 x 44 mm ³			58 x 44 x 44 mm ³		673 x 44 x 29 mm ³	
Operating temperature	+5 ... 50 °C			+5 ... 45 °C		+5 ... 50 °C	